



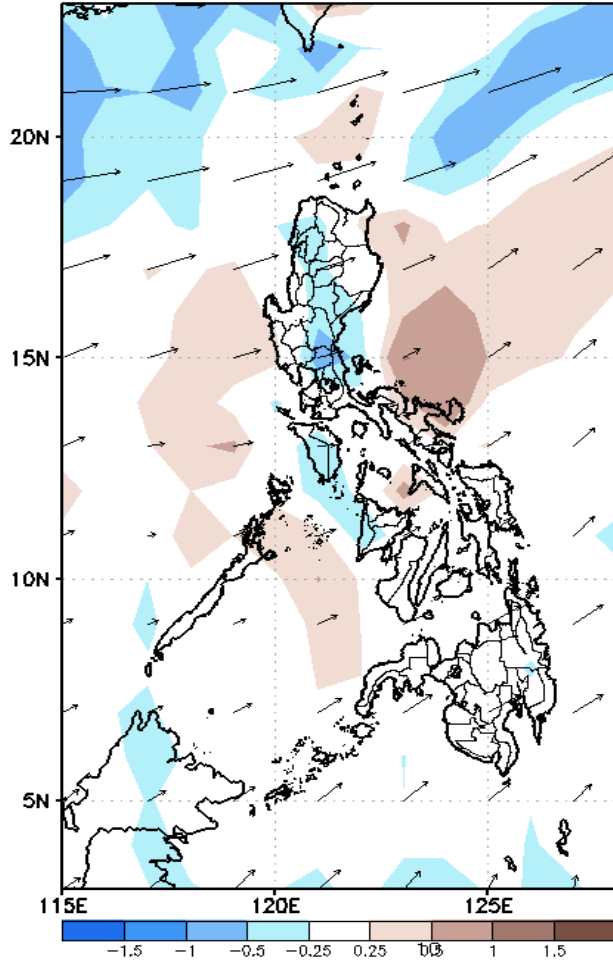
Week 1 & Week 2 Forecast for the Philippines using GEFS Model



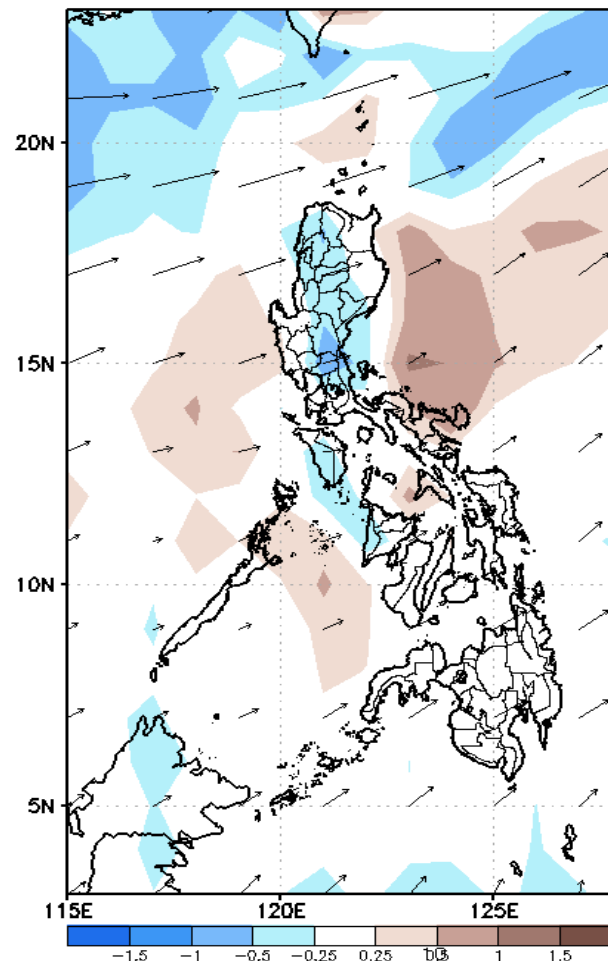
GEFS Week-1 Forecasts: Divergence & Wind Anomaly

Week 1: January 7-13, 2021

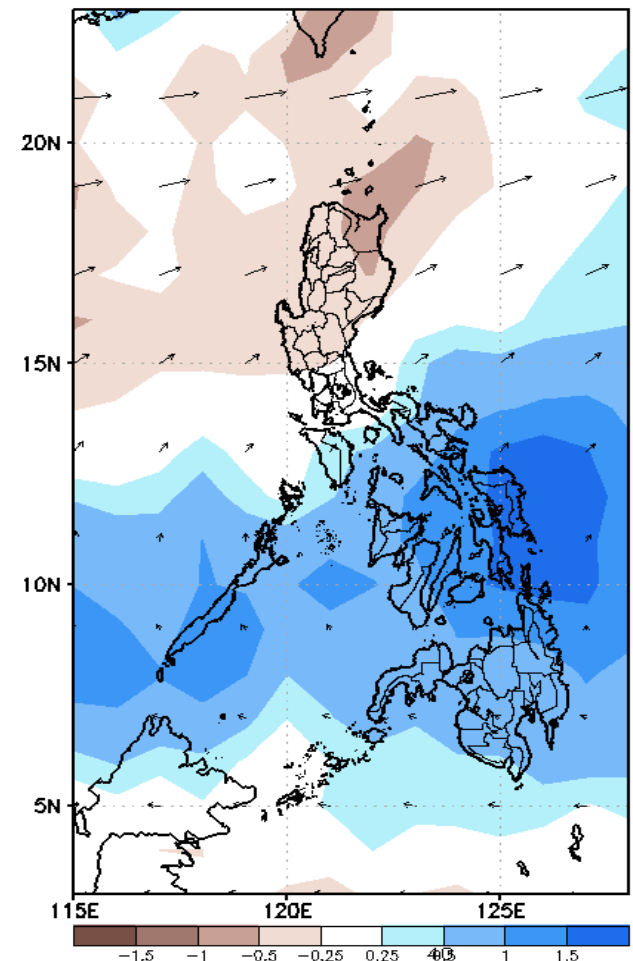
GEFS Week-1 850-hPa Divergence and Wind Anom
Valid: 20210107 - 20210113



GEFS Week-1 700-hPa Divergence and Wind Anom
Valid: 20210107 - 20210113



GEFS Week-1 200-hPa Divergence and Wind Anom
Valid: 20210107 - 20210113

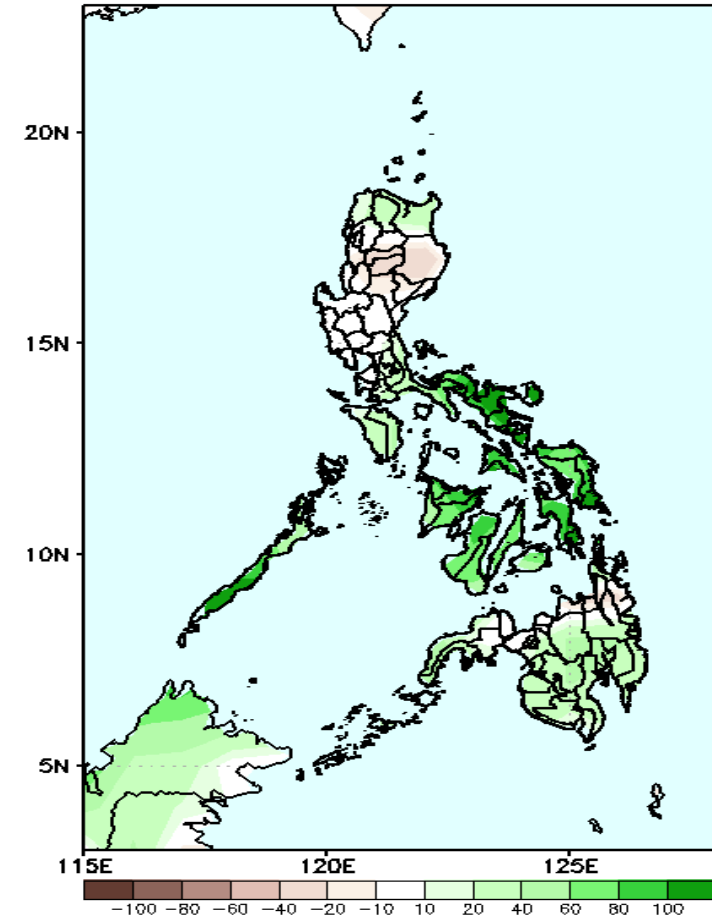


Upper and low level Divergence suggest likelihood of precipitation in most parts of the country except in some areas of Western Luzon. Northeast Monsoon affecting most parts of Luzon. Easterlies affecting Visayas and Mindanao during the forecast period.

Precipitation Anomaly and Exceedance Probability > 25/50 mm

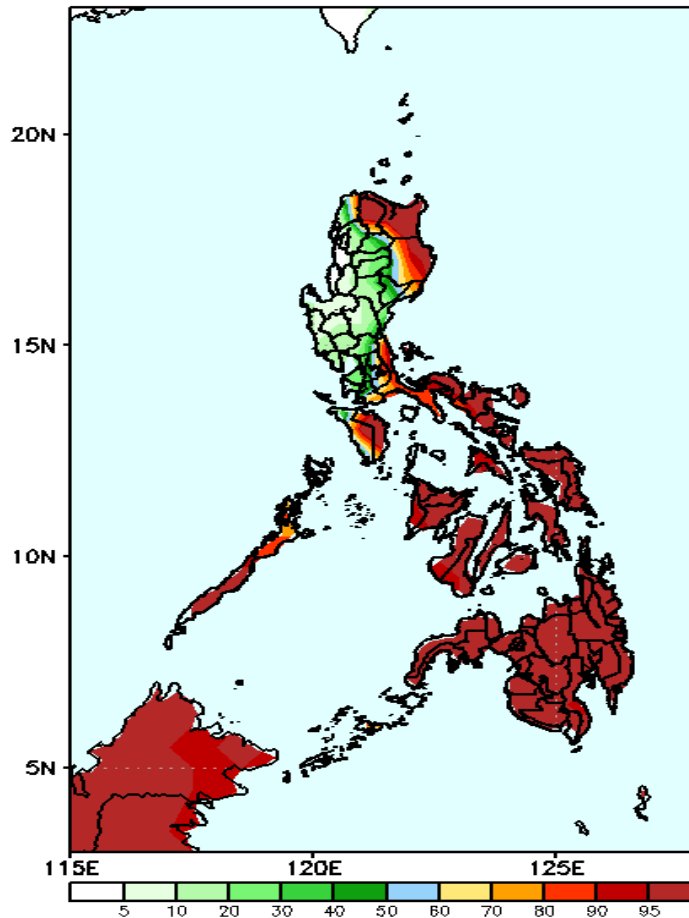
Week 1: January 7-13, 2021

GEFS Week-1 Precip Anomaly
Valid: 20210107 - 20210113



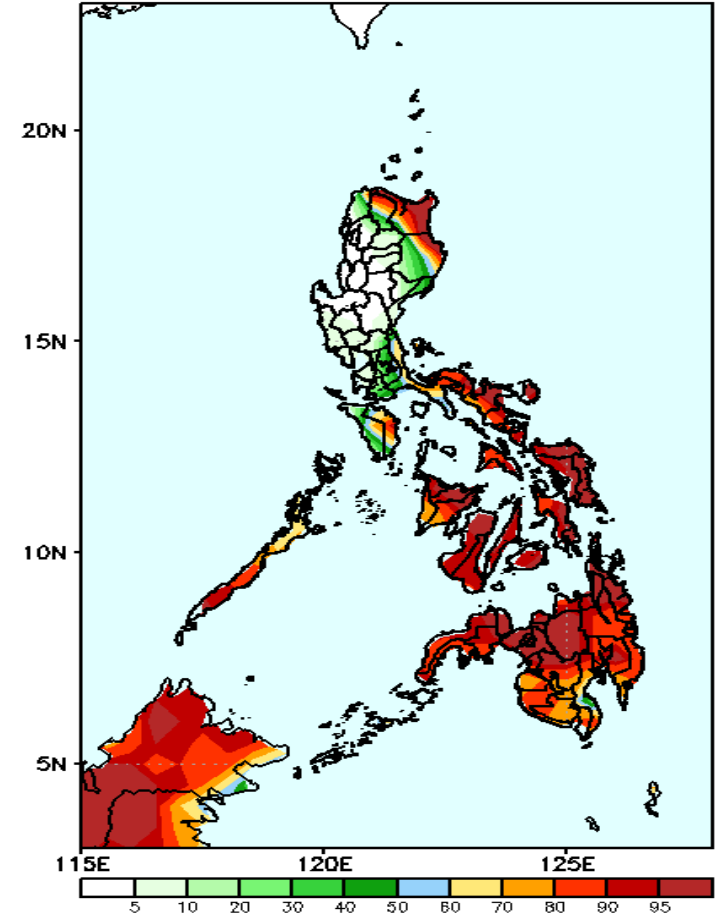
Increase of rainfall of 70-100mm is expected in Bicol Region, and most parts of Visayas.

GEFS Week-1 Exceedance Prob. > 25mm
Valid: 20210107 - 20210113



High probability of rainfall to exceed 25mm in Apayao, Cagayan, Isabela, Southern Luzon, Bicol Region and in most parts of Visayas and Mindanao during the forecast period.

GEFS Week-1 Exceedance Prob. > 50mm
Valid: 20210107 - 20210113

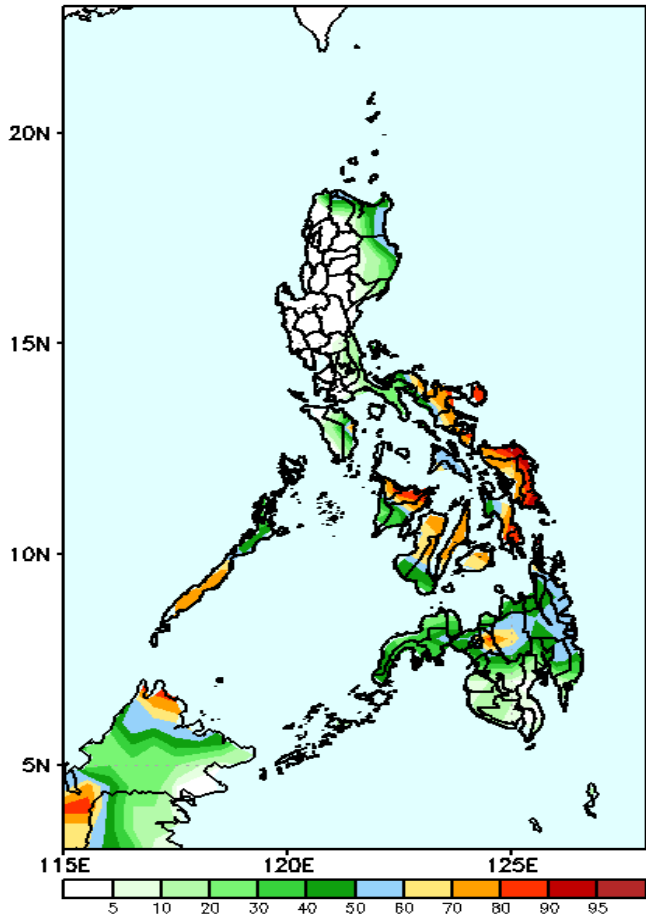


High probability of rainfall to exceed 50mm in Apayao, Cagayan, Isabela, Southern Luzon, Bicol Region and in most parts of Visayas and Mindanao during the forecast period.

Exceedance Probability > 100/150/200 mm

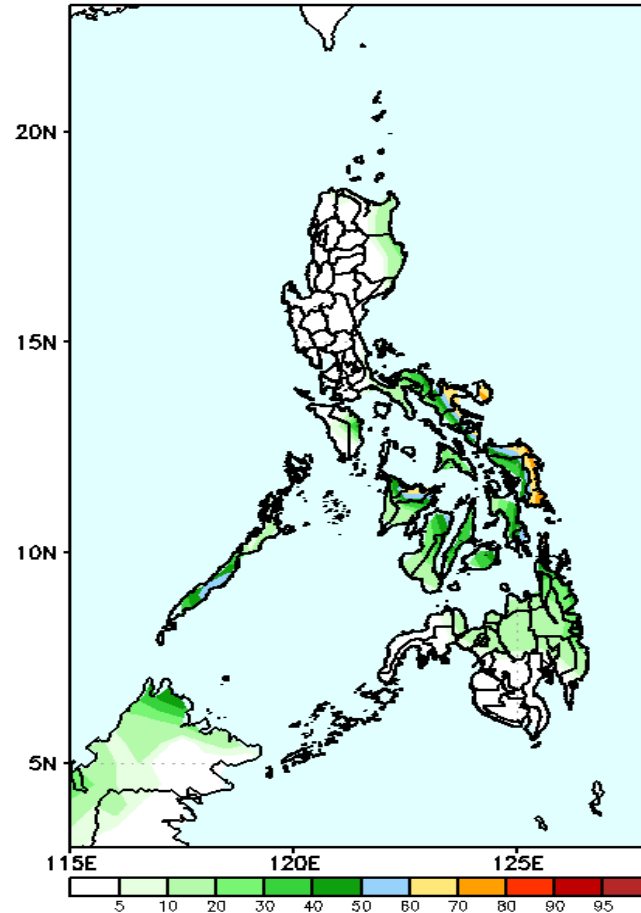
Week 1: January 7-13, 2021

GEFS Week-1 Exceedance Prob. > 100mm
Valid: 20210107 - 20210113



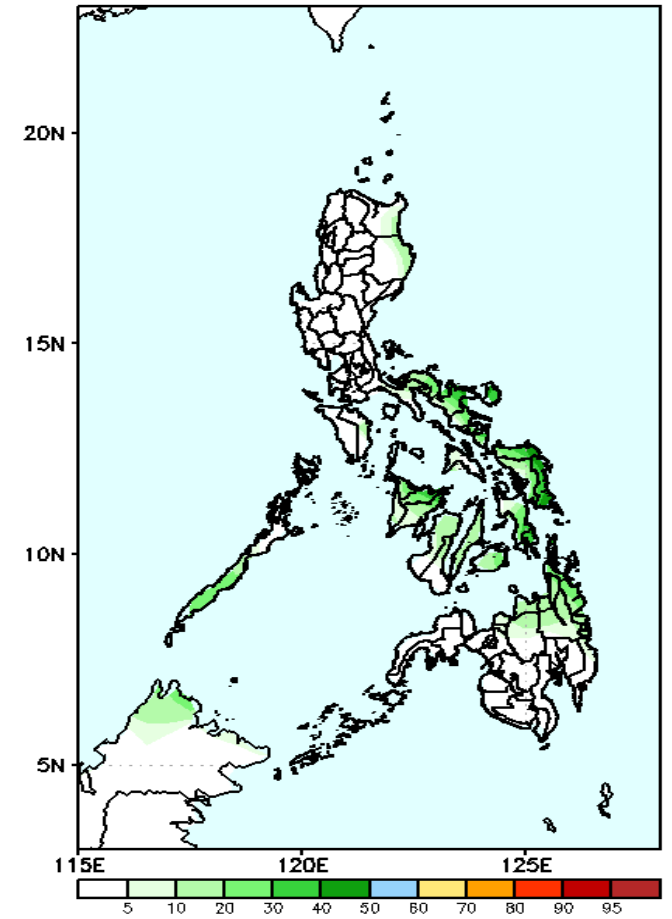
60-95% probability of rainfall to exceed 100mm in most parts of Visayas and Bukidnon while less likely for the rest of the country during the forecast period.

GEFS Week-1 Exceedance Prob. > 150mm
Valid: 20210107 - 20210113



Less probability of rainfall to exceed 150mm in most parts of the country during the forecast period.

GEFS Week-1 Exceedance Prob. > 200mm
Valid: 20210107 - 20210113



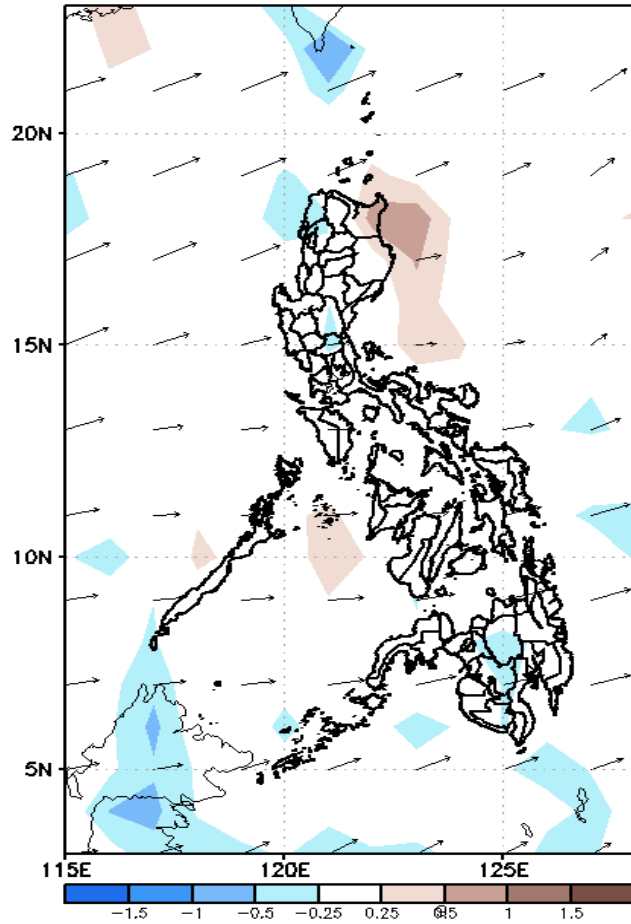
Less probability of rainfall to exceed 200mm in most parts of the country during the forecast period.



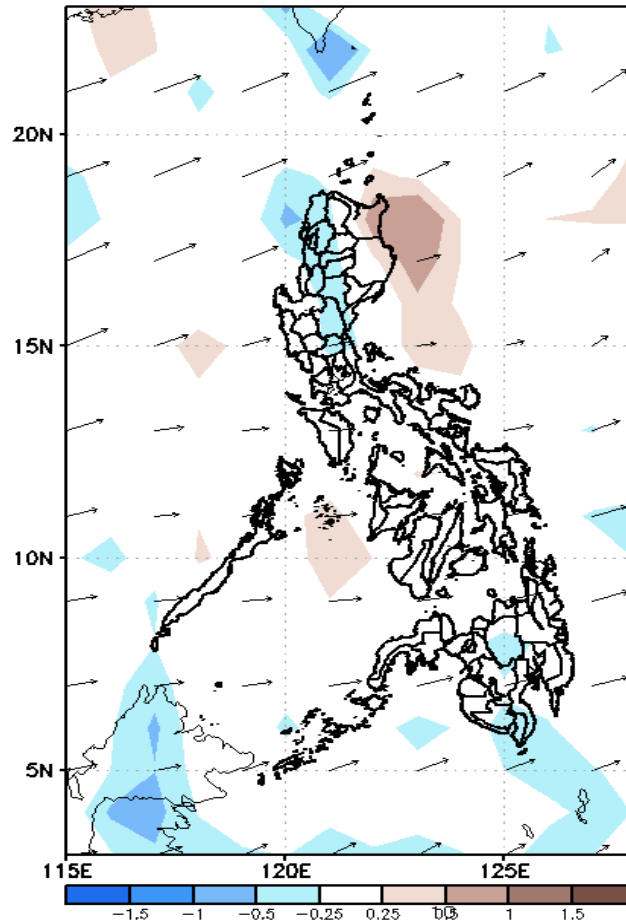
GEFS Week-2 Forecasts: Divergence & Wind Anomaly

Week 2: January 14-20, 2021

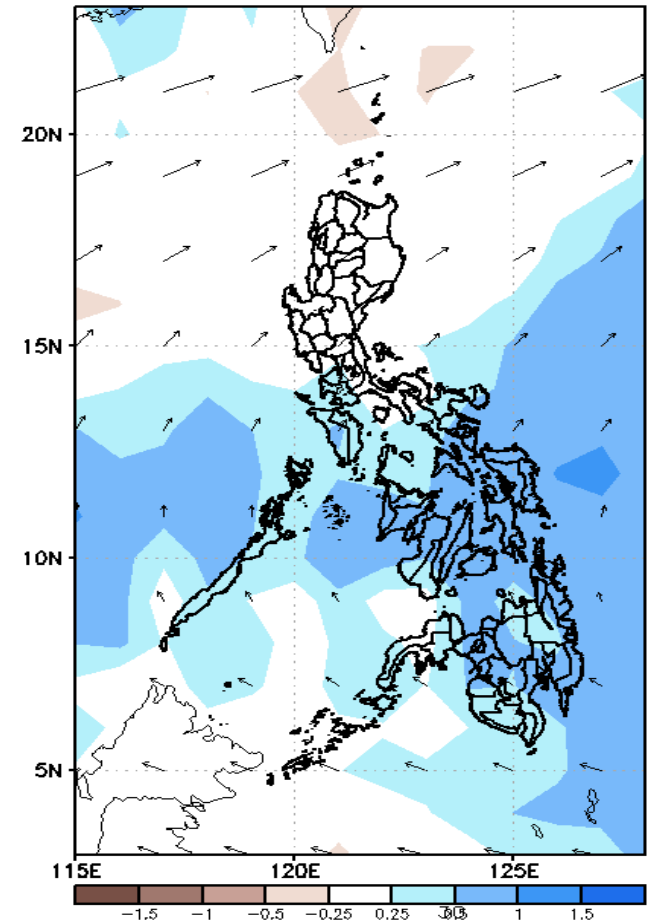
GEFS Week-2 850-hPa Divergence and Wind Anom
Valid: 20210114 - 20210120



GEFS Week-2 700-hPa Divergence and Wind Anom
Valid: 20210114 - 20210120



GEFS week-2 200-hPa Divergence and Wind Anom
Valid: 20210114 - 20210120

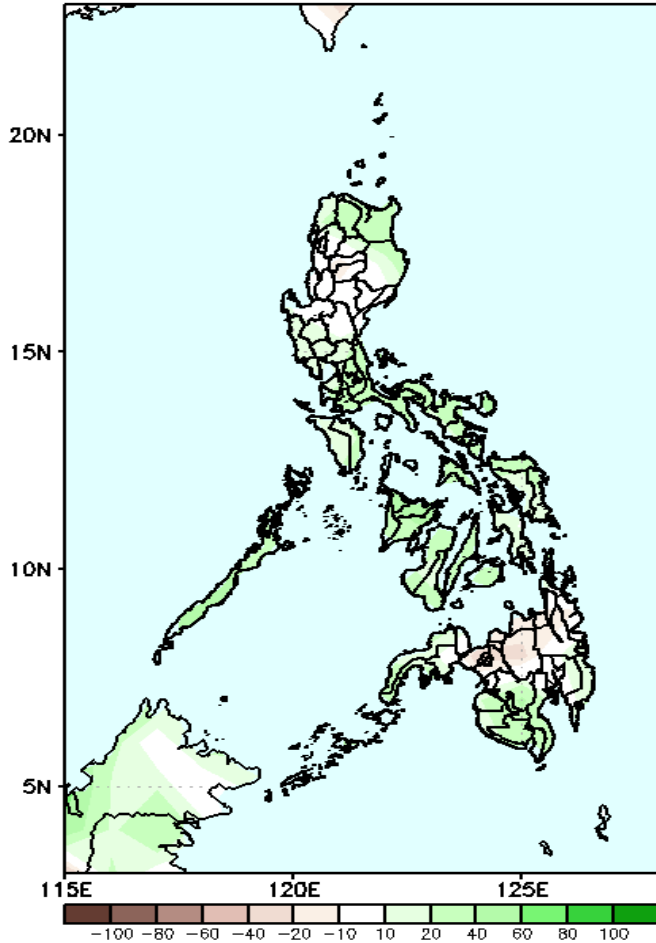


Upper and low level Divergence suggest likelihood of precipitation in most parts of Northern Luzon, parts of Bicol region and most parts of Visayas and Mindanao. Northeast Monsoon affecting most parts of Extreme Northern and Northern Luzon while easterlies affecting the rest of the country during the forecast period.

Precipitation Anomaly and Exceedance Probability > 25/50 mm

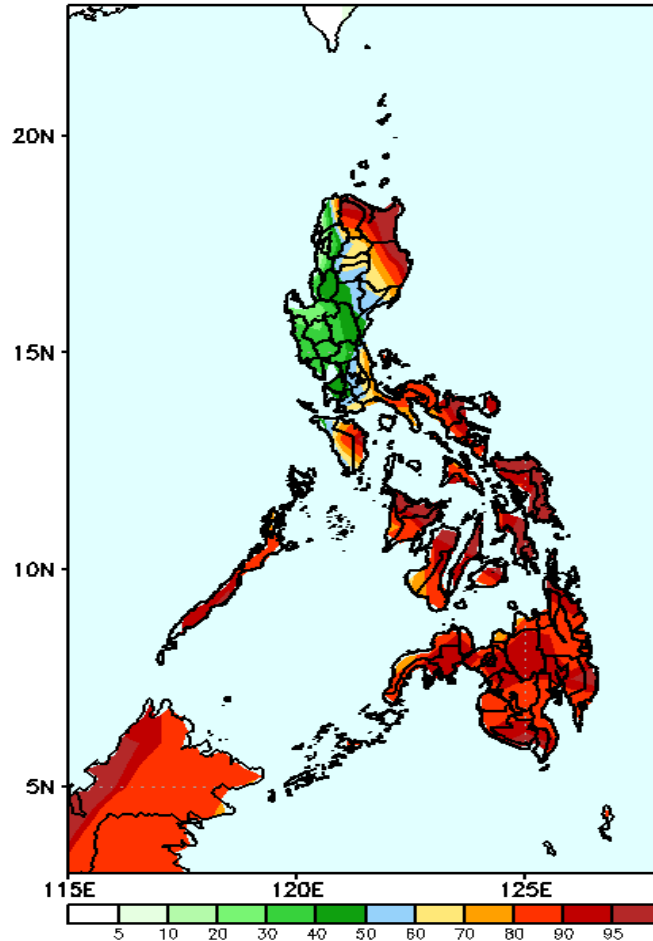
Week 2: January 14-20, 2021

GEFS Week-2 Precip Anomaly
Valid: 20210114 - 20210120



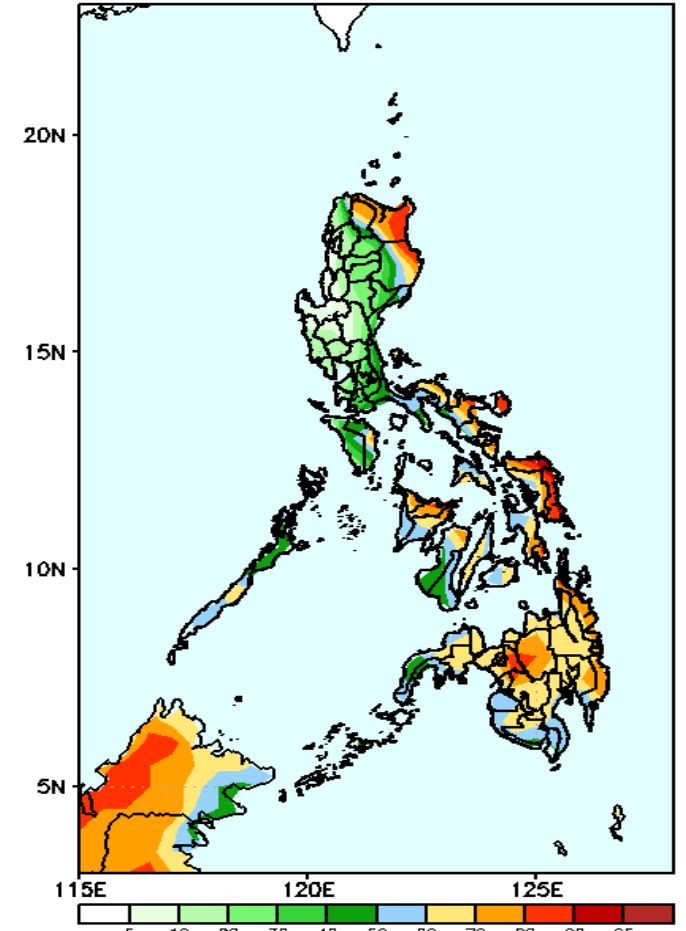
Increase of rainfall of up to 20mm is expected in most parts the country during the forecast period.

GEFS Week-2 Exceedance Prob. > 25mm
Valid: 20210114 - 20210120



High probability of rainfall to exceed 25mm in Apayao, Cagayan, Isabela, Southern Luzon, Bicol Region and in most parts of Visayas and Mindanao while less likely for the rest of the Luzon during the forecast period.

GEFS Week-2 Exceedance Prob. > 50mm
Valid: 20210114 - 20210120

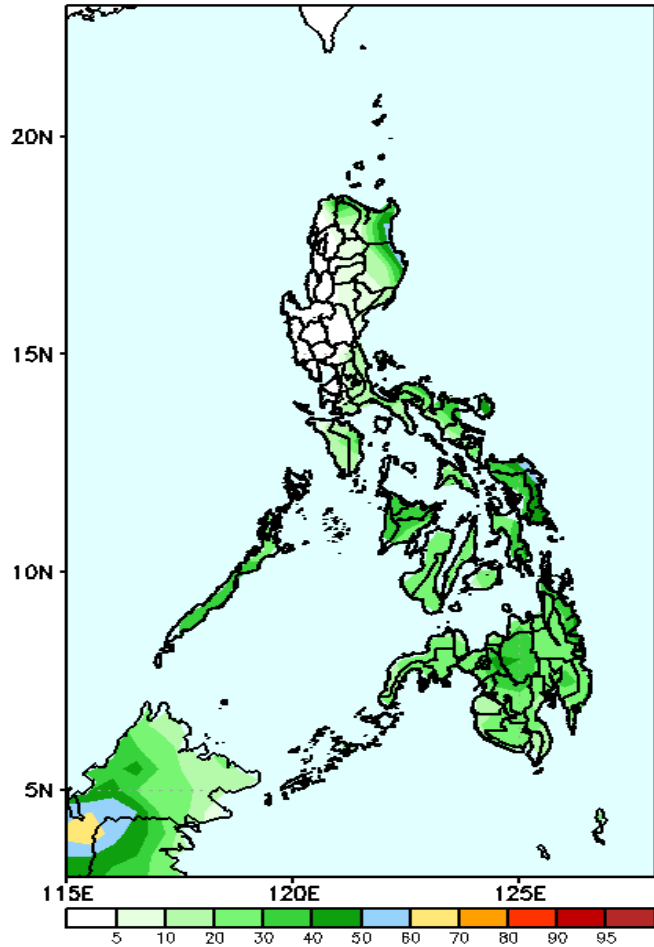


High probability of rainfall to exceed 50mm in Apayao, Cagayan, Isabela, Bicol Region, eastern Visayas, Aklan, Capiz and in most parts of Mindanao while less likely for the rest of the country during the forecast period.

Exceedance Probability > 100/150/200 mm

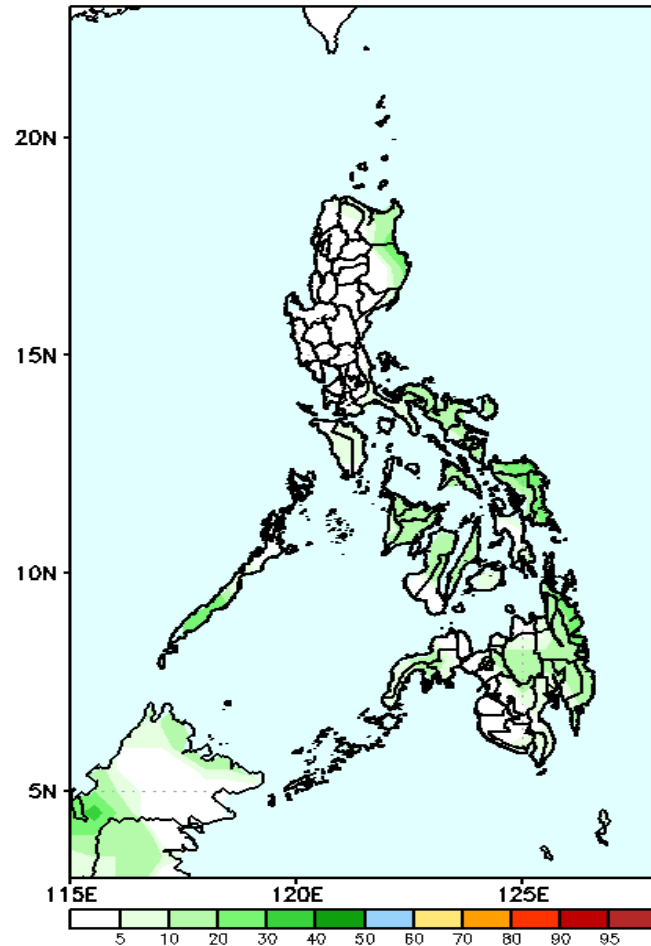
Week 2: January 14-20, 2021

GEFS Week-2 Exceedance Prob. > 100mm
Valid: 20210114 - 20210120



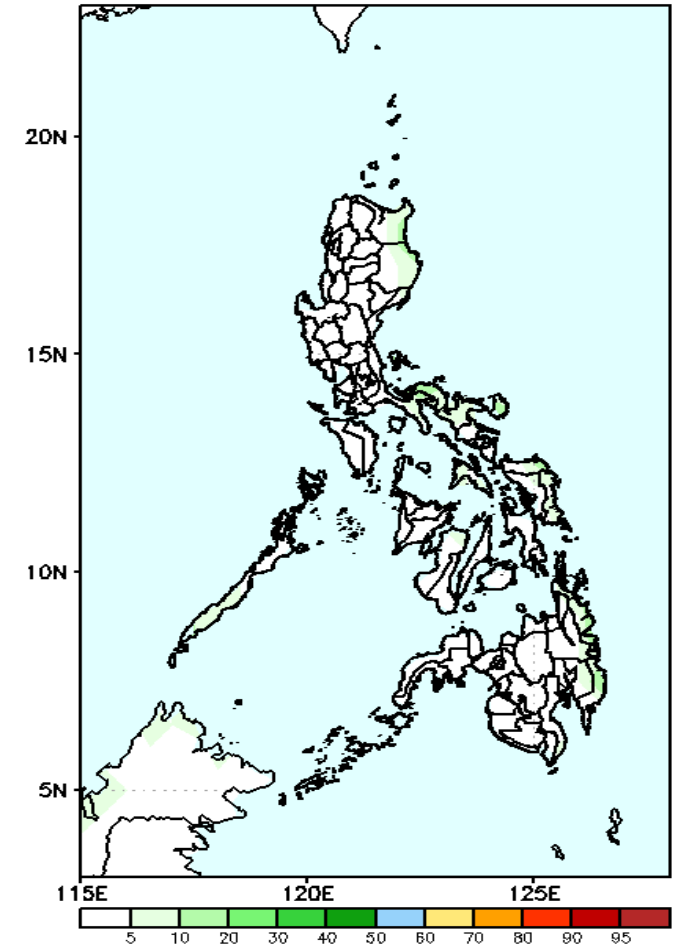
Less probability of rainfall to exceed 100mm in most parts of the country during the forecast period.

GEFS Week-2 Exceedance Prob. > 150mm
Valid: 20210114 - 20210120



Less probability of rainfall to exceed 150mm in most parts of the country during the forecast period.

GEFS Week-2 Exceedance Prob. > 200mm
Valid: 20210114 - 20210120

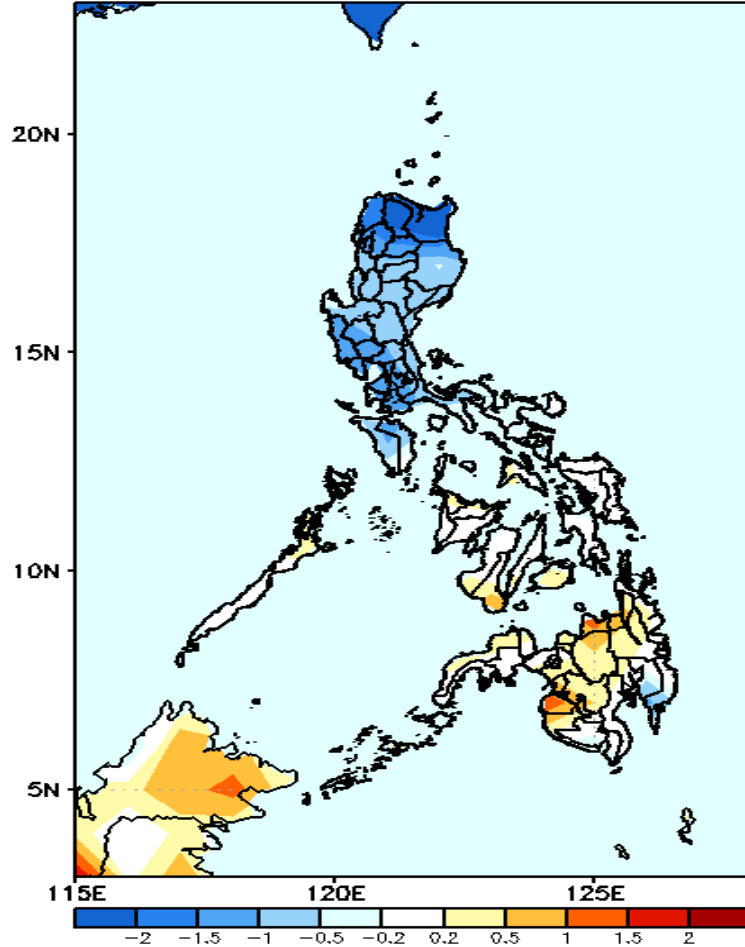


Less probability of rainfall to exceed 200mm in most parts of the country during the forecast period.



GEFS Week-1 & 2 Forecasts: T2m Anomaly

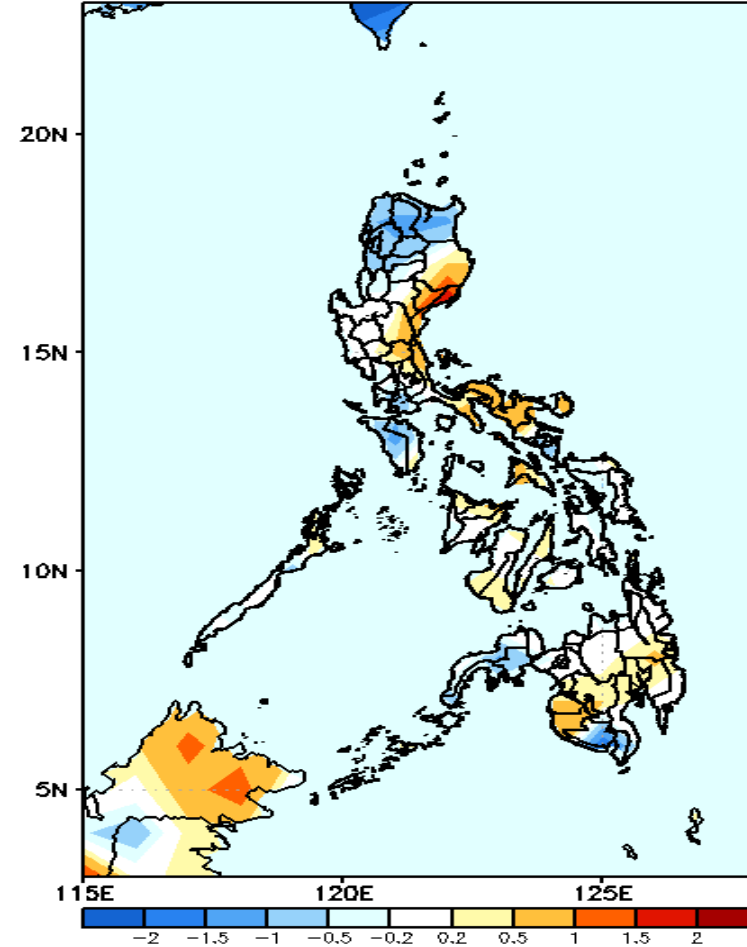
GEFS Week-1 T2m Anomaly
Valid: 20210107 - 20210113



2m Temperature Week 1: January 7-13, 2021

Slightly cooler to cooler than average surface air temperature is expected in most parts of Luzon while Mindanao will likely receive average to slightly warmer than average surface air temperature.

GEFS Week-2 T2m Anomaly
Valid: 20210114 - 20210120



2m Temperature Week 2: January 14-20, 2021

Cooler than average surface air temperature is expected in northeastern Luzon, Mindoro, Zamboanga Peninsula South Cotabato and Sarangani while slightly warmer than average temperature in eastern Luzon, Bicol Region & Masbate.